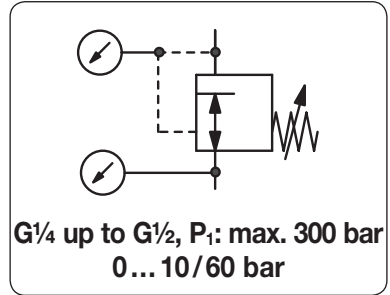
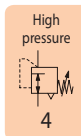


Description	Main pressure regulator up to 300 bar with G½ connection thread. A filter at the inlet port protects against contamination.
Media	compressed air, oxygen or different gases on request
Supply pressure	see chart, max. 300 bar
Connections	G¼ to G½, optionally according to DIN 477
Adjustment	by T-handle for RH15 and RH20 by hexagonal spindle (spanner size 20 mm) for RH40 and RH60
Gauge port	All regulators are equipped with both one supply pressure gauge and one outlet pressure gauge.
Leakage rate	10 ⁻⁶ mbar l/s
Compensation	without supply pressure variation compensation
Temperature range	-30 °C to 60 °C / -22 °F to 140 °F
Material	Body: brass O-rings: NBR/Buna-N Spring cage: brass Diaphragm: 65NBR4550, stainless steel for pure gases up to 5.0 or oxygen > 20 bar

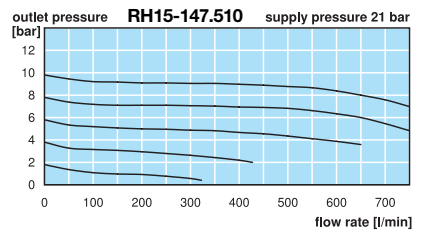
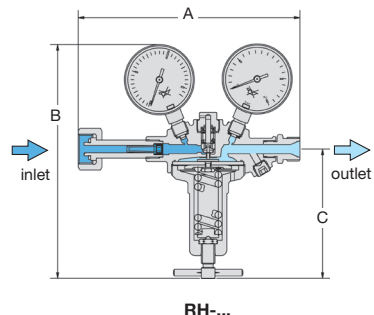


Dimensions			Flow rate		Supply pressure	Connection thread	Pressure range	Order number
A	B	C	m³/h*1	l/min*1	max. bar	G	bar	

Pressure regulator					for compressed air, supply and outlet pressure gauge supplied		RH	
150	205	115	50	830	100	G½	0 ... 10	RH-147.510
			75	1250			0 ... 20	RH-147.520
200	310	215	170	2830			0 ... 20	RH-147.525
			290	4830			15 ... 40	RH-147.545
			450	7500			15 ... 60	RH-147.565
150	205	115	50	830	200	G½	0 ... 10	RH-247.510
			75	1250			0 ... 20	RH-247.520
200	310	215	170	2830			0 ... 20	RH-247.525
			290	4830			15 ... 40	RH-247.545
			450	7500			15 ... 60	RH-247.565
150	205	115	50	830	300	G½	0 ... 10	RH-347.510
			75	1250			0 ... 20	RH-347.520
200	310	215	170	2830			0 ... 20	RH-347.525
			290	4830			15 ... 40	RH-347.545
			450	7500			15 ... 60	RH-347.565



Special options, add the appropriate letter		
G¼	connection thread, max. 100 bar	RH-. 27 ...
G¾	connection	RH-. 37 ...
oxygen	O ₂	RH-. 47 ... 15
inert gas		RH-. 47 ... 04
carbon dioxide	CO ₂	RH-. 47 ... 03
argon	Ar	RH-. 47 ... 05
helium	He	RH-. 47 ... 09
fuel gas		RH-. 47 ... 06
hydrogen	H ₂	RH-. 47 ... 11
forming gas		RH-. 47 ... 08
nitrogen	N ₂	RH-. 47 ... 07
testing gas		RH-. 47 ... 12
chrome plated body	inside and outside	RH-. 47 ... C
metal diaphragm	5.0 purity	RH-. 41 ... M



*1 at supply pressure of 2x outlet pressure + 1 bar